

This procedure for “*Subaru Impreza, Legacy, Forester, Outback, Liberty remote key – Worn out button replacement procedure*” was prepared by Polmex, Western Australian innovative Engineering Company, specializing in design and manufacture of special purpose Silicone products. Supplying to the market Silicone Buttons for worn out remote keys of various makes and models: Hyundai, Holden, Commodore, Ford, Mitsubishi, Nissan, Rover, Land Rover, Peugeot, BMW, Jeep, Mazda, Rover, Kia, Jeep, Mercedes and more...

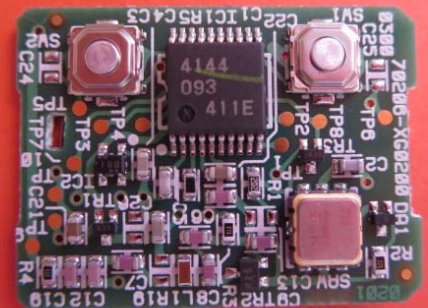
For Orders please visit us on line at www.polmex.com.au



New Silicone Pad

Polmex replacement Buttons are made from LSR Silicone and will not break, due to deteriorating effects of sunlight, water and chemicals commonly encountered in service such as Detergent, Oil, and Methanol.

will fit remote with this

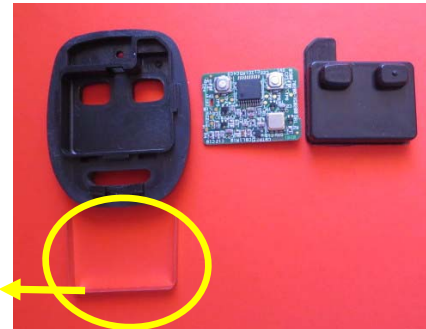


type of electronic board



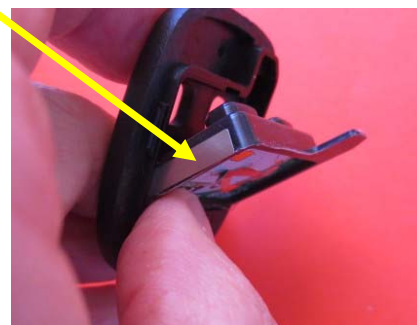
Button Replacement Procedure

1. Unscrew small screw located at the front of remote key, to end up with 2 parts: One consisting of hard shell and second one with electronic component and old rubber key button pad.



"U" shape metal plate

2. Remove internal components and separate old rubber pad from electronic board. Do not remove battery. You can discard unusable, worn rubber pad. Please take note of small ‘U’ shape metal plate going around key pad. It will be re-used.



3. To fit new Silicone pad in your remote, stretch it over electronic board first. Place metal plate around silicone pad. Next position new pad in shell part containing button cut out. Finish off by pushing pad thru key button cut out till pad is correctly positioned.



New Silicone Pad

fitted in

4. When top and bottom part of the shell are latched correctly, you can close whole case and screw it together using small Phillip screwdriver.

Once button replacement is finished, remote will work straight away with **no need for re-programming.**